



The Exposure

Journal of the Kansas and Missouri Paleontological Society

Volume 18, Number 2

Web Site - ksmopaleo.org

February 2014

**2014 Officers of the
Kansas and Missouri Paleontological Society:**

Gilbert Parker - President – 816-678-1943
Ken Stalder- Vice President – 816-807-3094
Katie Moore - Secretary – 913-334-5281
Dennis Whitney - Treasurer – 816-547-9566

2013 Board Members:

Ron Pridgen
Don Smith
Bruce Wake
Jim Hedstrom
Ken Stalder
Mary Ann Coleman

2013 Gem & Mineral Show Association Representatives:

Gilbert Parker - Delegate
Don Smith - Delegate
Ken Stalder – Alternate

School Display Committee: Gilbert Moore

Museum Display Committee: Tim Kearns

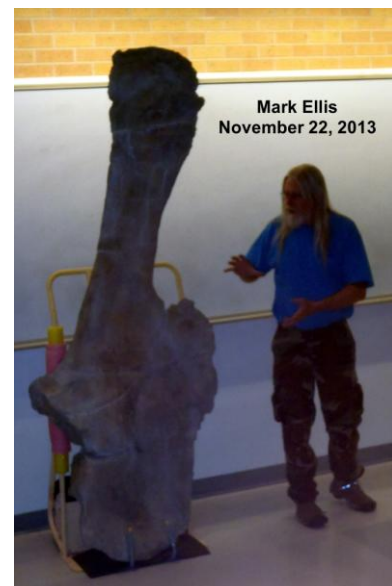
Announcement of February 16th 2014 Meeting

This month KMPS will hold its regular meeting will be held at Park University on Sunday, February 16th, at 2 p.m. in Parkville, Missouri. The lecture will be a surprise this month even to me.

Last months' presentation was by Dr. David Burnham from the University of Kansas. The title was, "1895 Geological Expedition -- KU's first dinosaur hunt." The lunch at Princess Gardens was again excellent.

Mark Ellis a Topeka Gem & Mineral Society member who unearthed the original Apatosaurus shoulder blade, brought the replica of it to the TGMS November meeting and to the 2013 October Gem show. He has plans to display it at the Topeka Children's Discovery Center for a few months. The height of the blade is 7 feet 8 inches. The original is being stored in Colorado, where it was found.
From the Drifter, January, 2014

Mark has been a member of KMPS in the past. His find is quite unique considering the rarity of Apatosaurus bones. Complete skeletons are non-existent.



Feb 14-16, 2014; Kirkwood, MO. Kirkwood Community Center 111 S. Geyer Rd. F-4-9; S-10-6; S- 10-4p.m.
www.cabinfeverprod.com

March 1-2, 2014; OK City, OK, OK State Fairgrounds Expo Hall 3, 3212 Wichita Walk, www.thebeadmarket.net

March 7-9, 2014; Kansas City, MO, KCI Expo Center, 11730 NW Ambassador Dr. www.kcgemshow.org

April 4-6, 2014; MAPS Expo, Iowa City, IA. Sharpless Auctions Facility, 5049 Herbert Hoover Hwy NE, I-80 Exit 249
F-8-5; S-8-5; Sun-8-12 noon. All fossils at the auction facility. Minerals and fossils will be sold at

April 25-27: Wichita Gem Show

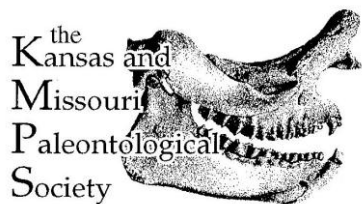
KMPS Membership Form

The Kansas and Missouri Paleontological Society would like to have you and your family as members. Memberships are \$12.00 for one year (January through December.) These fees will cover printing and postage for bulletins which will include meeting announcements and news in the field of paleontology and other minor expenses. We hope that you can join us in our exciting and informative new adventure. For more information contact: Gilbert Parker cell: 816-678-1943. gilparker@comcast.net

Names of all family members:	
Mailing address:	Apt.:
City and State:	Zip code:
Phone numbers:	
E-mail address:	
Special Paleontological interests, comments, questions:	

Please make checks payable to the Kansas and Missouri Paleontological Society or (KMPS)
c/o Gilbert Parker, 15505 E. 44th Terrace, Independence, MO 64055.

website at www.ksmopaleo.org



FIRST CLASS MAIL

Kansas and Missouri Paleontological Society
15505 E. 44th Terrace
Independence, Missouri 64055-5255

Dated Material - Meeting Notice 1/2014